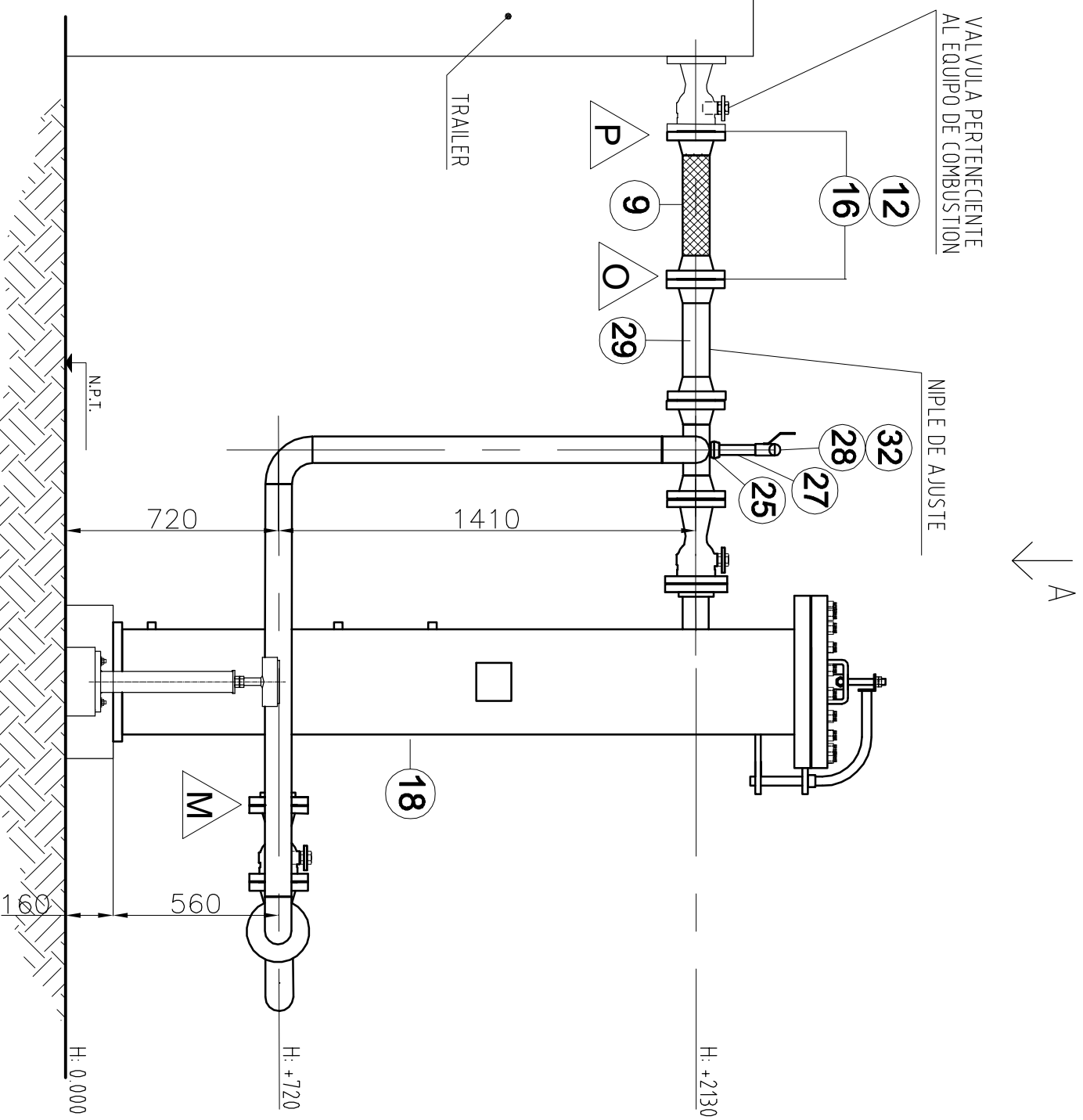


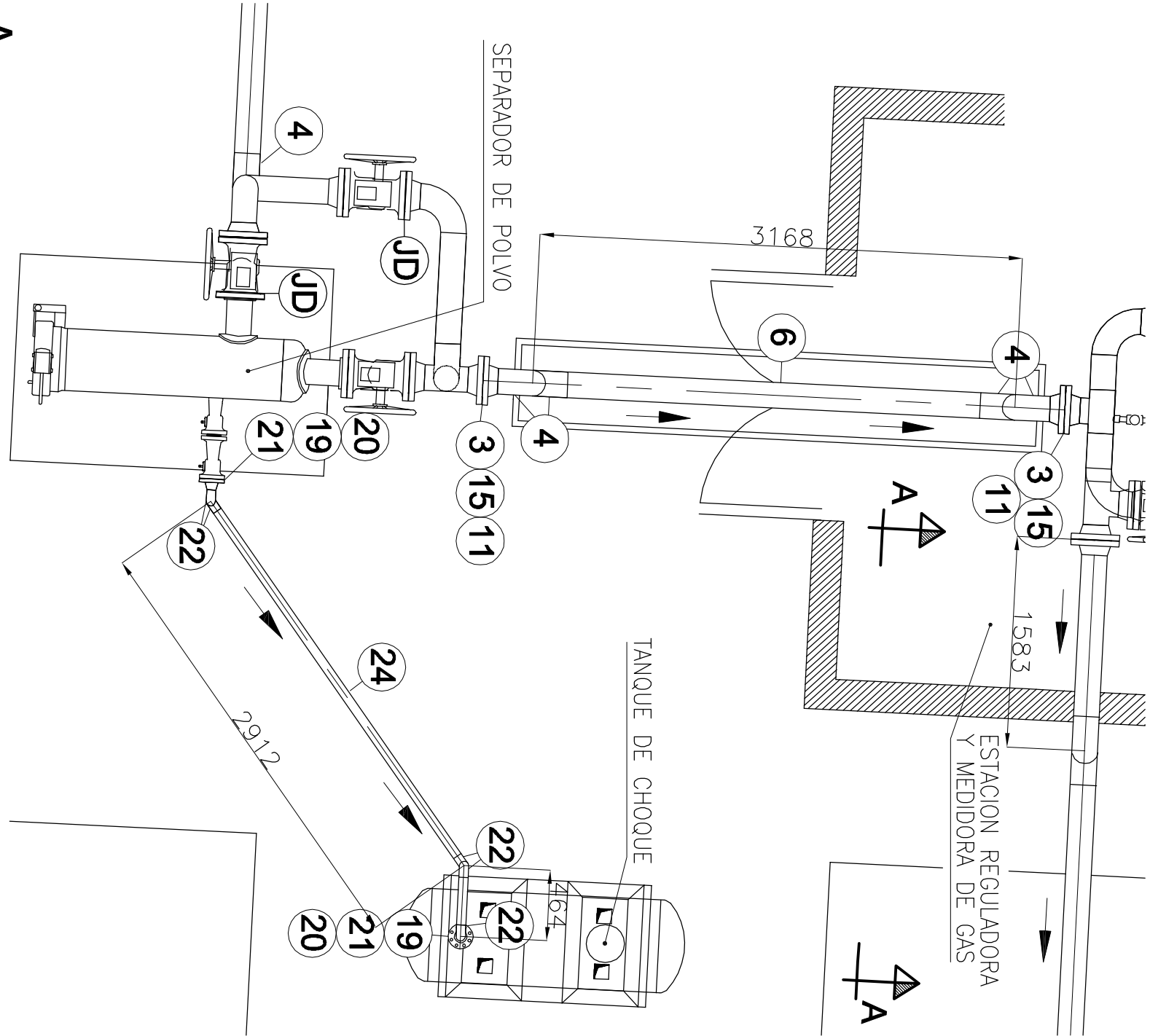
| PLANILLA DE ARTEFACTOS | | | | | | | | | | 23 | 24 |
|------------------------|-------|--------------|------------|------|-------|----------|-------|--------|-------|---------|----|
| POS. CONT. | CLASE | APLICACION | C/U | TOT. | CONT. | P. PROB. | DESP. | EVENI. | TEMP. | OBSERV. | |
| 1 | 1 | TUBERINA | GENERACION | 8000 | 8000 | 5 | 26 | | | | |
| 2 | 1 | TOMA TURBINA | --- | 8000 | 8000 | --- | 26 | | | | |

PLANILLA DE MATERIALES

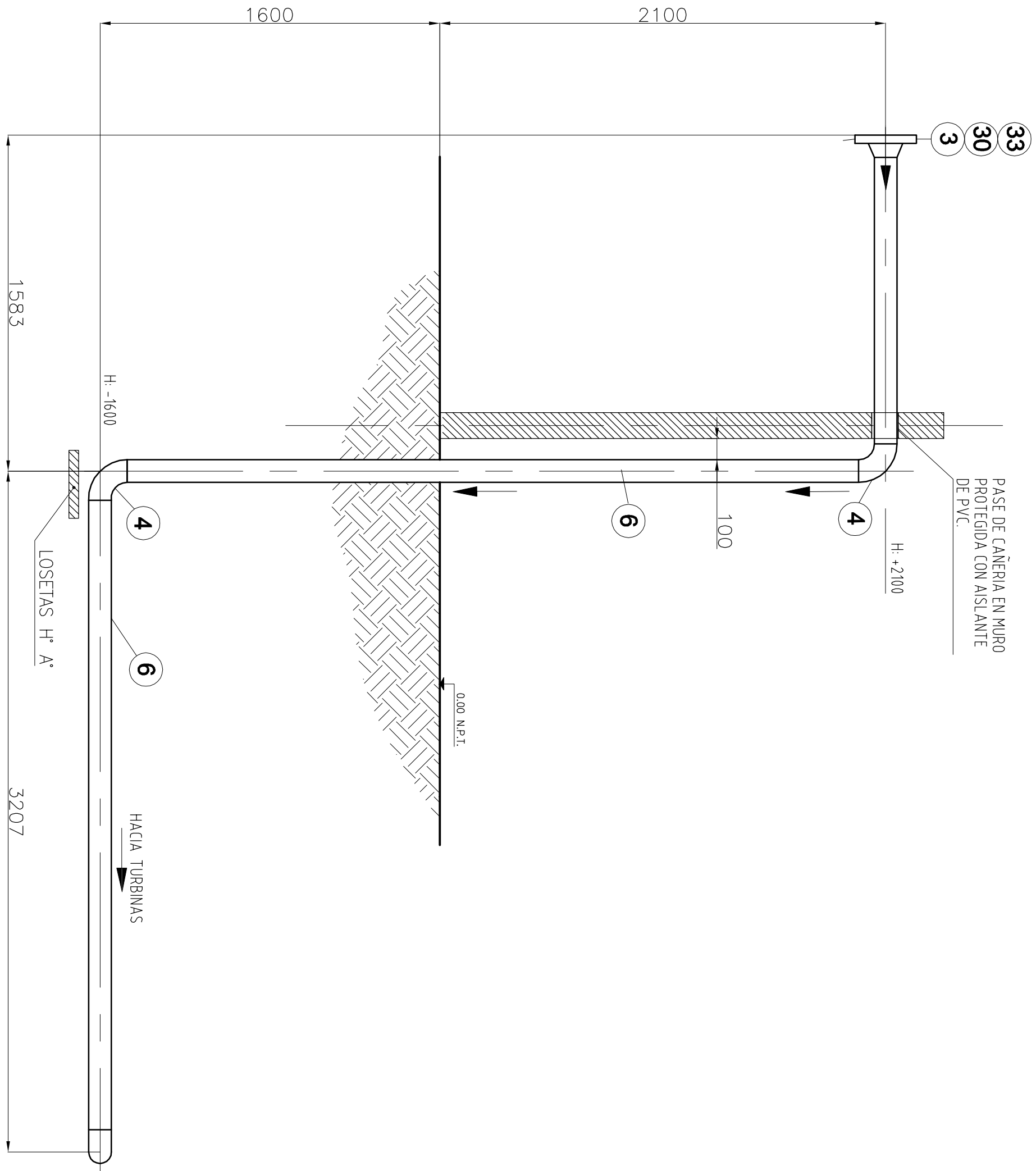
| POS. CONT. | DESCRIPCION | DIMENSION (mm.) | MATERIAL | FORMA O PROPOSICION DE PROTECCION | REPRESENTANTE | |
|------------|-------------|---|----------|-----------------------------------|---------------|--------|
| 2 | 3 | BRIDA METAL. NICK PARA SOLDAR | 762 | ACER A 105 | 5.300 | FINURA |
| 3 | 3 | BRIDA METAL. NICK PARA SOLDAR | 762 | ACER A 105 | 5.300 | FINURA |
| 4 | 3 | BRIDA METAL. NICK PARA SOLDAR | 762 | ACER A 105 | 5.300 | FINURA |
| 5 | 6 | CODER DE BORDO PARA SOLDAR | 762 | ACER A 234 MB | ESQ. 250. | CONTRO |
| 6 | 7 | CODER DE CONEXION PARA SOLDAR | 1524 | ACER A 53 O-B | ESQ. 250. | ACROR |
| 7 | 24 | CODER DE CONEXION PARA SOLDAR | 762 | ACER A 53 O-B | ESQ. 250. | CONTRO |
| 8 | 1 | TUBERIA | 762 | ACER A 105 | 5.300 | CONTRO |
| 9 | 1 | TUBERIA | 762 | ACER A 105 | 5.300 | CONTRO |
| 10 | 1 | TUBERIA | 1524 | ACER A 53 O-B | ESQ. 250. | CONTRO |
| 11 | 2 | JUNTA | 1524 | ACER A 105 | 5.300 | CONTRO |
| 12 | 8 | JUNTA | 1524 | ACER A 105 | 5.300 | CONTRO |
| 13 | 8 | JUNTA | 1524 | ACER A 105 | 5.300 | CONTRO |
| 14 | 16 | ESPECIALIZADO PARA SOLDAR | 1524 | ACER A 105 | 5.300 | CONTRO |
| 15 | 16 | ESPECIALIZADO PARA SOLDAR | 1524 | ACER A 105 | 5.300 | CONTRO |
| 16 | 16 | ESPECIALIZADO PARA SOLDAR | 1524 | ACER A 105 | 5.300 | CONTRO |
| 17 | 4 | WALDUI DE BORDO ETERNA. ACER A 105 | 1514 | ACER A 105 | 5.300 | CONTRO |
| 18 | 1 | CANALIZ. TUBERIA. NICK 1524 | 762 | ACER A 234 MB | ESQ. 250. | CONTRO |
| 19 | 3 | CANALIZ. TUBERIA. NICK 1524 | 762 | ACER A 234 MB | ESQ. 250. | CONTRO |
| 20 | 3 | CANALIZ. TUBERIA. NICK 1524 | 762 | ACER A 234 MB | ESQ. 250. | CONTRO |
| 21 | 3 | JUNTA ETERNA. CANALIZ. TUBERIA. NICK 1524 | 1514 | ACER A 105 | 5.300 | CONTRO |
| 22 | 3 | CODER DE BORDO PARA SOLDAR | 762 | ACER A 234 MB | ESQ. 250. | CONTRO |
| 23 | 1 | BRIDA METAL. NICK PARA SOLDAR | 762 | ACER A 105 | 5.300 | CONTRO |
| 24 | 24 | CODER DE CONEXION PARA SOLDAR | 762 | ACER A 53 O-B | ESQ. 250. | CONTRO |
| 25 | 2 | BRIDA METAL. NICK PARA SOLDAR | 762 | ACER A 105 | 5.300 | CONTRO |
| 26 | 2 | BRIDA METAL. NICK PARA SOLDAR | 762 | ACER A 105 | 5.300 | CONTRO |
| 27 | 1 | BRIDA METAL. NICK PARA SOLDAR | 762 | ACER A 105 | 5.300 | CONTRO |
| 28 | 2 | BRIDA METAL. NICK PARA SOLDAR | 762 | ACER A 105 | 5.300 | CONTRO |
| 29 | 2 | BRIDA METAL. NICK PARA SOLDAR | 762 | ACER A 105 | 5.300 | CONTRO |
| 30 | 2 | BRIDA METAL. NICK PARA SOLDAR | 762 | ACER A 105 | 5.300 | CONTRO |
| 31 | 1 | JUNTA ETERNA. CANALIZ. TUBERIA. NICK 1524 | 1514 | ACER A 105 | 5.300 | CONTRO |
| 32 | 1 | TUBERIA. NICK 1524 | 762 | ACER A 105 | 5.300 | CONTRO |



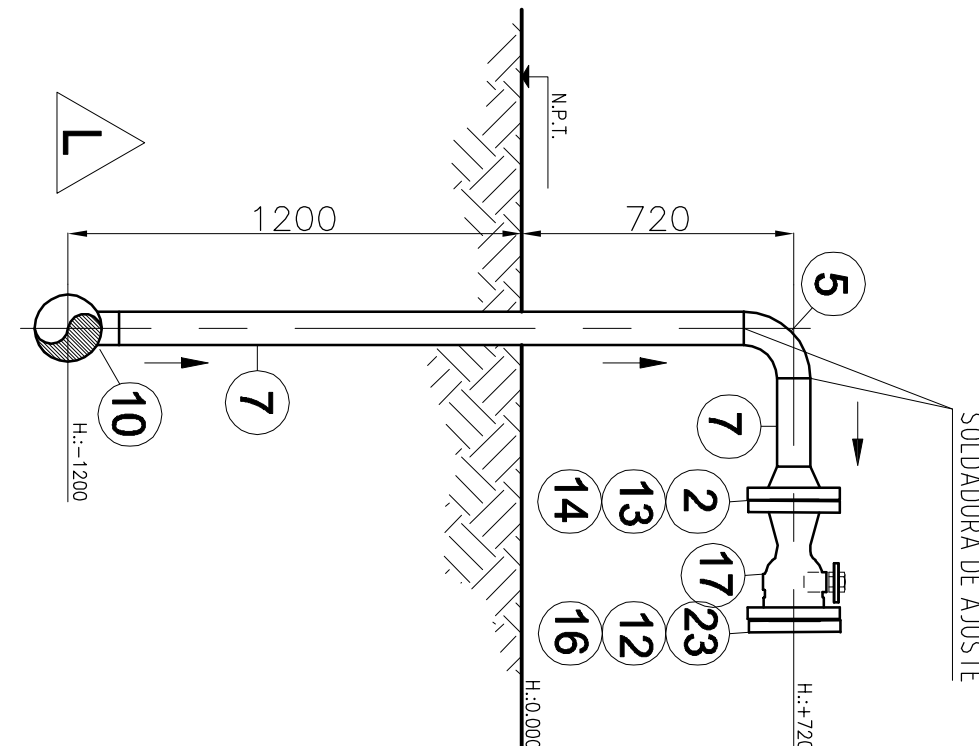
DETALLE 4
ESC.: 1/40



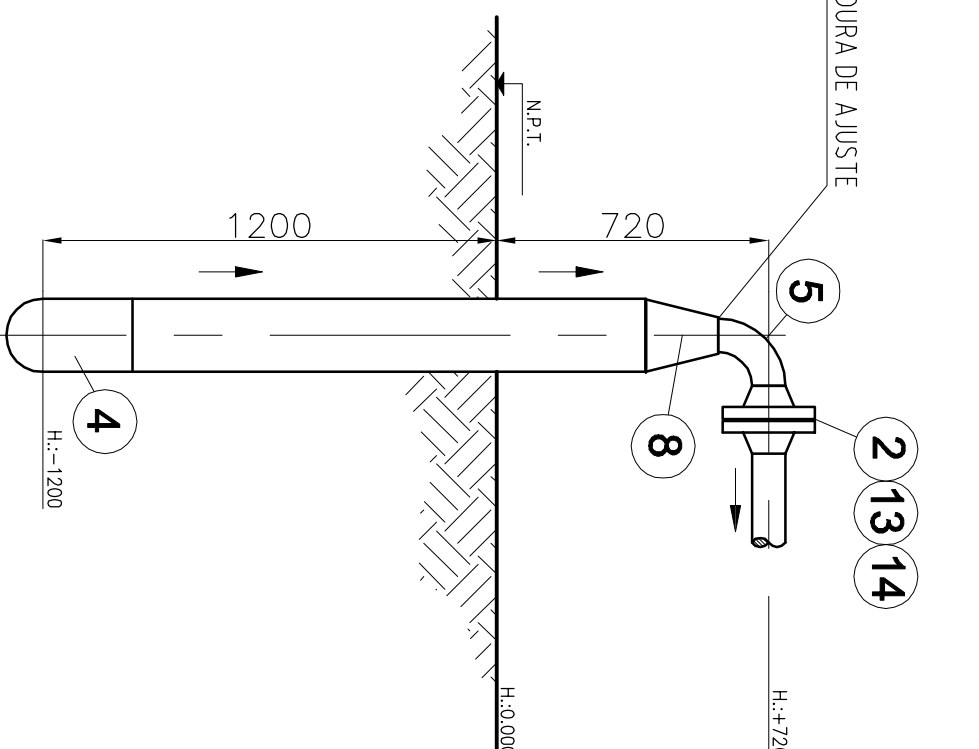
CORTE A-A
ESC.: 1/20



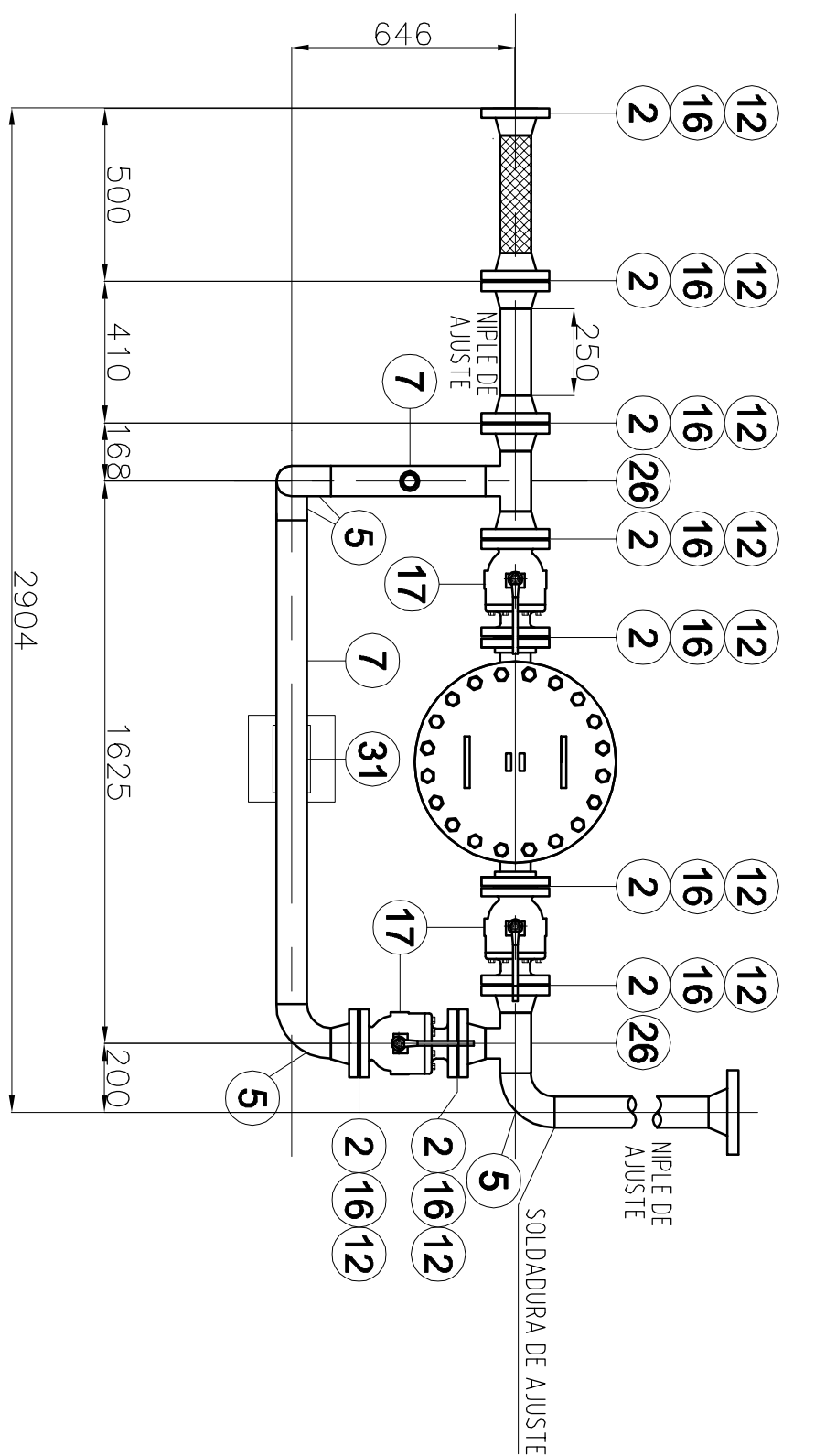
DETALLE 2
ESC.: 1/20



DETALLE 3
ESC.: 1/20



VISTA A
ESC.: 1/20



| TUBO | CALCULO | CONDICION | P1 | P2 | P1 + P2 | CONDICION | CONDICION | CONDICION |
|-------|---------|-----------|------|------|---------|-----------|-----------|-----------|
| | | | PER | PER | PER | PER | PER | PER |
| 1-1 | 1600 | 450 | 1150 | 5000 | 5490 | 0.8889 | 1524 | 6.85 |
| 2-1 | 1600 | 450 | 1150 | 5000 | 5490 | 0.8889 | 1524 | 6.85 |
| 3-1 | 1600 | 450 | 1150 | 5000 | 5490 | 0.8889 | 1524 | 6.85 |
| 4-1 | 1600 | 450 | 1150 | 5000 | 5490 | 0.8889 | 1524 | 6.85 |
| 5-1 | 1600 | 450 | 1150 | 5000 | 5490 | 0.8889 | 1524 | 6.85 |
| 6-1 | 1600 | 450 | 1150 | 5000 | 5490 | 0.8889 | 1524 | 6.85 |
| 7-1 | 1600 | 450 | 1150 | 5000 | 5490 | 0.8889 | 1524 | 6.85 |
| 8-1 | 1600 | 450 | 1150 | 5000 | 5490 | 0.8889 | 1524 | 6.85 |
| 9-1 | 1600 | 450 | 1150 | 5000 | 5490 | 0.8889 | 1524 | 6.85 |
| 10-1 | 1600 | 450 | 1150 | 5000 | 5490 | 0.8889 | 1524 | 6.85 |
| 11-1 | 1600 | 450 | 1150 | 5000 | 5490 | 0.8889 | 1524 | 6.85 |
| 12-1 | 1600 | 450 | 1150 | 5000 | 5490 | 0.8889 | 1524 | 6.85 |
| 13-1 | 1600 | 450 | 1150 | 5000 | 5490 | 0.8889 | 1524 | 6.85 |
| 14-1 | 1600 | 450 | 1150 | 5000 | 5490 | 0.8889 | 1524 | 6.85 |
| 15-1 | 1600 | 450 | 1150 | 5000 | 5490 | 0.8889 | 1524 | 6.85 |
| 16-1 | 1600 | 450 | 1150 | 5000 | 5490 | 0.8889 | 1524 | 6.85 |
| 17-1 | 1600 | 450 | 1150 | 5000 | 5490 | 0.8889 | 1524 | 6.85 |
| 18-1 | 1600 | 450 | 1150 | 5000 | 5490 | 0.8889 | 1524 | 6.85 |
| 19-1 | 1600 | 450 | 1150 | 5000 | 5490 | 0.8889 | 1524 | 6.85 |
| 20-1 | 1600 | 450 | 1150 | 5000 | 5490 | 0.8889 | 1524 | 6.85 |
| 21-1 | 1600 | 450 | 1150 | 5000 | 5490 | 0.8889 | 1524 | 6.85 |
| 22-1 | 1600 | 450 | 1150 | 5000 | 5490 | 0.8889 | 1524 | 6.85 |
| 23-1 | 1600 | 450 | 1150 | 5000 | 5490 | 0.8889 | 1524 | 6.85 |
| 24-1 | 1600 | 450 | 1150 | 5000 | 5490 | 0.8889 | 1524 | 6.85 |
| 25-1 | 1600 | 450 | 1150 | 5000 | 5490 | 0.8889 | 1524 | 6.85 |
| 26-1 | 1600 | 450 | 1150 | 5000 | 5490 | 0.8889 | 1524 | 6.85 |
| 27-1 | 1600 | 450 | 1150 | 5000 | 5490 | 0.8889 | 1524 | 6.85 |
| 28-1 | 1600 | 450 | 1150 | 5000 | 5490 | 0.8889 | 1524 | 6.85 |
| 29-1 | 1600 | 450 | 1150 | 5000 | 5490 | 0.8889 | 1524 | 6.85 |
| 30-1 | 1600 | 450 | 1150 | 5000 | 5490 | 0.8889 | 1524 | 6.85 |
| 31-1 | 1600 | 450 | 1150 | 5000 | 5490 | 0.8889 | 1524 | 6.85 |
| 32-1 | 1600 | 450 | 1150 | 5000 | 5490 | 0.8889 | 1524 | 6.85 |
| 33-1 | 1600 | 450 | 1150 | 5000 | 5490 | 0.8889 | 1524 | 6.85 |
| 34-1 | 1600 | 450 | 1150 | 5000 | 5490 | 0.8889 | 1524 | 6.85 |
| 35-1 | 1600 | 450 | 1150 | 5000 | 5490 | 0.8889 | 1524 | 6.85 |
| 36-1 | 1600 | 450 | 1150 | 5000 | 5490 | 0.8889 | 1524 | 6.85 |
| 37-1 | 1600 | 450 | 1150 | 5000 | 5490 | 0.8889 | 1524 | 6.85 |
| 38-1 | 1600 | 450 | 1150 | 5000 | 5490 | 0.8889 | 1524 | 6.85 |
| 39-1 | 1600 | 450 | 1150 | 5000 | 5490 | 0.8889 | 1524 | 6.85 |
| 40-1 | 1600 | 450 | 1150 | 5000 | 5490 | 0.8889 | 1524 | 6.85 |
| 41-1 | 1600 | 450 | 1150 | 5000 | 5490 | 0.8889 | 1524 | 6.85 |
| 42-1 | 1600 | 450 | 1150 | 5000 | 5490 | 0.8889 | 1524 | 6.85 |
| 43-1 | 1600 | 450 | 1150 | 5000 | 5490 | 0.8889 | 1524 | 6.85 |
| 44-1 | 1600 | 450 | 1150 | 5000 | 5490 | 0.8889 | 1524 | 6.85 |
| 45-1 | 1600 | 450 | 1150 | 5000 | 5490 | 0.8889 | 1524 | 6.85 |
| 46-1 | 1600 | 450 | 1150 | 5000 | 5490 | 0.8889 | 1524 | 6.85 |
| 47-1 | 1600 | 450 | 1150 | 5000 | 5490 | 0.8889 | 1524 | 6.85 |
| 48-1 | 1600 | 450 | 1150 | 5000 | 5490 | 0.8889 | 1524 | 6.85 |
| 49-1 | 1600 | 450 | 1150 | 5000 | 5490 | 0.8889 | 1524 | 6.85 |
| 50-1 | 1600 | 450 | 1150 | 5000 | 5490 | 0.8889 | 1524 | 6.85 |
| 51-1 | 1600 | 450 | 1150 | 5000 | 5490 | 0.8889 | 1524 | 6.85 |
| 52-1 | 1600 | 450 | 1150 | 5000 | 5490 | 0.8889 | 1524 | 6.85 |
| 53-1 | 1600 | 450 | 1150 | 5000 | 5490 | 0.8889 | 1524 | 6.85 |
| 54-1 | 1600 | 450 | 1150 | 5000 | 5490 | 0.8889 | 1524 | 6.85 |
| 55-1 | 1600 | 450 | 1150 | 5000 | 5490 | 0.8889 | 1524 | 6.85 |
| 56-1 | 1600 | 450 | 1150 | 5000 | 5490 | 0.8889 | 1524 | 6.85 |
| 57-1 | 1600 | 450 | 1150 | 5000 | 5490 | 0.8889 | 1524 | 6.85 |
| 58-1 | 1600 | 450 | 1150 | 5000 | 5490 | 0.8889 | 1524 | 6.85 |
| 59-1 | 1600 | 450 | 1150 | 5000 | 5490 | 0.8889 | 1524 | 6.85 |
| 60-1 | 1600 | 450 | 1150 | 5000 | 5490 | 0.8889 | 1524 | 6.85 |
| 61-1 | 1600 | 450 | 1150 | 5000 | 5490 | 0.8889 | 1524 | 6.85 |
| 62-1 | 1600 | 450 | 1150 | 5000 | 5490 | 0.8889 | 1524 | 6.85 |
| 63-1 | 1600 | 450 | 1150 | 5000 | 5490 | 0.8889 | 1524 | 6.85 |
| 64-1 | 1600 | 450 | 1150 | 5000 | 5490 | 0.8889 | 1524 | 6.85 |
| 65-1 | 1600 | 450 | 1150 | 5000 | 5490 | 0.8889 | 1524 | 6.85 |
| 66-1 | 1600 | 450 | 1150 | 5000 | 5490 | 0.8889 | 1524 | 6.85 |
| 67-1 | 1600 | 450 | 1150 | 5000 | 5490 | 0.8889 | 1524 | 6.85 |
| 68-1 | 1600 | 450 | 1150 | 5000 | 5490 | 0.8889 | 1524 | 6.85 |
| 69-1 | 1600 | 450 | 1150 | 5000 | 5490 | 0.8889 | 1524 | 6.85 |
| 70-1 | 1600 | 450 | 1150 | 5000 | 5490 | 0.8889 | 1524 | 6.85 |
| 71-1 | 1600 | 450 | 1150 | 5000 | 5490 | 0.8889 | 1524 | 6.85 |
| 72-1 | 1600 | 450 | 1150 | 5000 | 5490 | 0.8889 | 1524 | 6.85 |
| 73-1 | 1600 | 450 | 1150 | 5000 | 5490 | 0.8889 | 1524 | 6.85 |
| 74-1 | 1600 | 450 | 1150 | 5000 | 5490 | 0.8889 | 1524 | 6.85 |
| 75-1 | 1600 | 450 | 1150 | 5000 | 5490 | 0.8889 | 1524 | 6.85 |
| 76-1 | 1600 | 450 | 1150 | 5000 | 5490 | 0.8889 | 1524 | 6.85 |
| 77-1 | 1600 | 450 | 1150 | 5000 | 5490 | 0.8889 | 1524 | 6.85 |
| 78-1 | 1600 | 450 | 1150 | 5000 | 5490 | 0.8889 | 1524 | 6.85 |
| 79-1 | 1600 | 450 | 1150 | 5000 | 5490 | 0.8889 | 1524 | 6.85 |
| 80-1 | 1600 | 450 | 1150 | 5000 | 5490 | 0.8889 | 1524 | 6.85 |
| 81-1 | 1600 | 450 | 1150 | 5000 | 5490 | 0.8889 | 1524 | 6.85 |
| 82-1 | 1600 | 450 | 1150 | 5000 | 5490 | 0.8889 | 1524 | 6.85 |
| 83-1 | 1600 | 450 | 1150 | 5000 | 5490 | 0.8889 | 1524 | 6.85 |
| 84-1 | 1600 | 450 | 1150 | 5000 | 5490 | 0.8889 | 1524 | 6.85 |
| 85-1 | 1600 | 450 | 1150 | 5000 | 5490 | 0.8889 | 1524 | 6.85 |
| 86-1 | 1600 | 450 | 1150 | 5000 | 5490 | 0.8889 | 1524 | 6.85 |
| 87-1 | 1600 | 450 | 1150 | 5000 | 5490 | 0.8889 | 1524 | 6.85 |
| 88-1 | 1600 | 450 | 1150 | 5000 | 5490 | 0.8889 | 1524 | 6.85 |
| 89-1 | 1600 | 450 | 1150 | 5000 | 5490 | 0.8889 | 1524 | 6.85 |
| 90-1 | 1600 | 450 | 1150 | 5000 | 5490 | 0.8889 | 1524 | 6.85 |
| 91-1 | 1600 | 450 | 1150 | 5000 | 5490 | 0.8889 | 1524 | 6.85 |
| 92-1 | 1600 | 450 | 1150 | 5000 | 5490 | 0.8889 | 1524 | 6.85 |
| 93-1 | 1600 | 450 | 1150 | 5000 | 5490 | 0.8889 | 1524 | 6.85 |
| 94-1 | 1600 | 450 | 1150 | 5000 | 5490 | 0.8889 | 1524 | 6.85 |
| 95-1 | 1600 | 450 | 1150 | 5000 | 5490 | 0.8889 | 1524 | 6.85 |
| 96-1 | 1600 | 450 | 1150 | 5000 | 5490 | 0.8889 | 1524 | 6.85 |
| 97-1 | 1600 | 450 | 1150 | 5000 | 5490 | 0.8889 | 1524 | 6.85 |
| 98-1 | 1600 | 450 | 1150 | 5000 | 5490 | 0.8889 | 1524 | 6.85 |
| 99-1 | 1600 | 450 | 1150 | 5000 | 5490 | 0.8889 | 1524 | 6.85 |
| 100-1 | 1600 | 450 | 1150 | 5000 | 5490 | 0.8889 | 1524 | 6.85 |
| 101-1 | 1600 | 450 | 1150 | 5000 | 5490 | 0.8889 | 1524 | 6.85 |
| 102-1 | 1600 | 450 | 1150 | 5000 | 5490 | 0.8889 | 1524 | 6.85 |
| 103-1 | 1600 | 450 | 1150 | 5000 | 5490 | 0.8889 | 1524 | 6.85 |
| 104-1 | 1600 | 450 | 1150 | 5000 | 5490 | 0.8889 | 1524 | 6.85 |
| 105-1 | 1600 | 450 | 1150 | 5000 | 5490 | 0.8889 | 1524 | 6.85 |
| 106-1 | 1600 | 450 | 1150 | 5000 | 5490 | 0.8889 | 1524 | 6.85 |
| 107-1 | 1600 | 450 | 1150 | 5000 | 5490 | 0.8889 | 1524 | 6.85 |
| 108-1 | 1600 | 450 | 1150 | 5000 | 5490 | 0.8889 | 1524 | 6.85 |
| 109-1 | 1600 | 450 | 1150 | 5000 | 5490 | 0.8889 | 1524 | 6.85 |
| 110-1 | 1600 | 450 | 1150 | 5000 | 5490 | 0.8889 | 1524 | 6.85 |
| 111-1 | 1600 | 450 | 1150 | 5000 | 5490 | 0.8889 | 1524 | 6.85 |
| 112-1 | 1600 | 450 | 1150 | 5000 | 5490 | 0.8889 | 1524 | 6.85 |
| 113-1 | 1600 | 450 | 1150 | 5000 | 5490 | 0.8889 | 1524 | 6.85 |
| 114-1 | 1600 | 450 | 1150 | 5000 | 5490 | 0.8889 | 1524 | 6.85 |
| 115-1 | 1600 | 450 | 1150 | 5000 | 5490 | 0.8889 | 1524 | 6.85 |
| 116-1 | 1600 | 450 | 1150 | 5000 | 5490 | 0.8889 | 1524 | 6.85 |
| 117-1 | 1600 | 450 | 1150 | 5000 | 5490 | 0.8889 | 1524 | 6.85 |
| 118-1 | 1600 | 450 | 1150 | 5000 | 5490 | 0.8889 | 1524 | 6.85 |
| 119-1 | 1600 | 450 | 1150 | 5000 | 5490 | 0.8889 | 1524 | 6.85 |
| 120-1 | 1600 | 450 | 1150 | 5000 | 5490 | 0.8889 | 1524 | 6.85 |
| 121-1 | 1600 | 450 | 1150 | 5000 | 5490 | 0.8889 | 1524 | 6.85 |
| 122-1 | 1600 | 450 | 1150 | 5000 | 5490 | 0.8889 | 1524 | 6.85 |
| 123-1 | 1600 | 450 | 1150 | 5000 | 5490 | 0.8889 | 1524 | 6.85 |
| 124-1 | 1600 | 450 | 1150 | 5000 | 5490 | 0.8889 | 1524 | 6.85 |
| 125-1 | 1600 | 450 | 1150 | 5000 | 5490 | 0.8889 | 1524 | 6.85 |
| 126-1 | 1600 | 450 | 1150 | 5000 | 5490 | 0.8889 | 1524 | 6.85 |
| 127-1 | 1600 | 450 | 1150 | 5000 | 5490 | 0.8889 | 1524 | 6.85 |
| 128-1 | 1600 | 450 | 1150 | 5000 | 5490 | 0.8889 | 1524 | 6.85 |
| 129-1 | 1600 | 450 | 1150 | 5000 | 5490 | 0.8889 | 1524 | 6.85 |
| 130-1 | 1600 | 450 | 1150 | 5000 | 5490 | 0.8889 | 1524 | 6.85 |
| 131-1 | 1600 | 450 | 1150 | 5000 | 5490 | 0.8889 | 1524 | 6.85 |
| 132-1 | 1600 | 450 | 1150 | 5000 | 5490 | 0.8889 | 1524 | 6.85 |
| 133-1 | 1600 | 450 | 1150 | 5000 | 5490 | 0.8889 | 1524 | 6.85 |
| 134-1 | 1600 | 450 | 1150 | 5000 | 5490 | 0.8889 | 1524 | 6.85 |
| 135-1 | 1600 | 450 | 1150 | 5000 | 5490 | 0.8889 | 1524 | 6.85 |
| 136-1 | 1600 | 450 | 1150 | 5000 | 5490 | 0.8889 | 1524 | 6.85 |
| 137-1 | 1600 | 450 | 1150 | 5000 | 5490 | 0.8889 | 1524 | 6.85 |
| 138-1 | 1600 | 450 | 1150 | 5000 | 5490 | 0.8889 | 1524 | 6.85 |
| 139-1 | 1600 | 450 | 1150 | 5000 | 5490 | 0.8889 | 1524 | 6.85 |
| 140-1 | 1600 | 450 | 1150 | 5000 | 5490 | 0.8889 | 1524 | 6.85 |
| 141-1 | 1600 | 450 | 1150 | 5000 | 5490 | 0.8889 | 1524 | 6.85 |
| 142-1 | 1600 | 450 | 1150 | 5000 | 5490 | 0.8889 | 1524 | 6.85 |
| 143-1 | | | | | | | | |